



it's about time



# Control for Kx

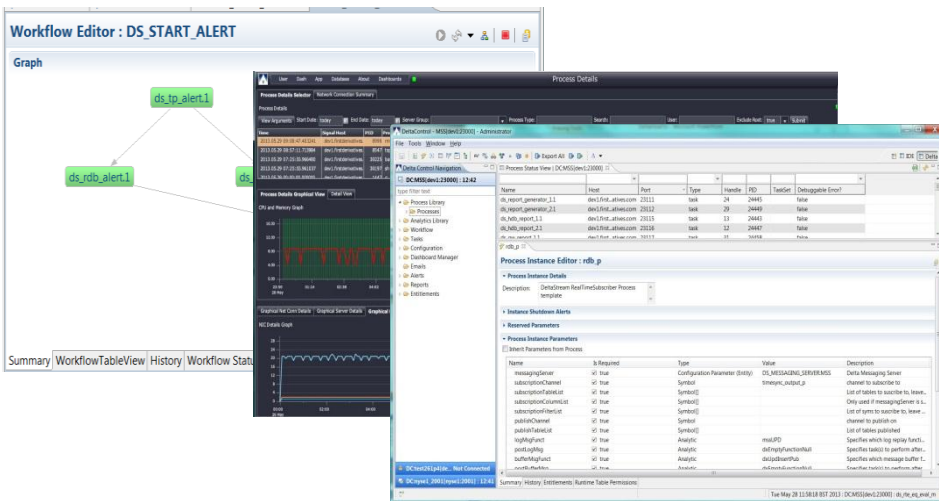
## A Framework of Visibility, Governance and Control

Control for Kx provides our clients with the flexibility required for product development and design, but with the ability to exercise rigorous control across their application landscape, with full visibility into what processes are currently running and a resilient governance framework in place to ensure full ownership and accountability.

This product represents an all-encompassing code and process management system, acting as a framework of visibility and governance across Kx applications and processes, allowing clients to build up libraries of analytics and process workflows for rapid application development, debugging and continuous deployment.

A centralised configuration management system controls where, when and how applications are run, providing cross-landscape consistency over development patterns, release management and version control.

Its enterprise features form the core on which we have built all Kx products. Control for Kx offers a single integrated software platform, providing the framework for quicker, easier implementation of custom solutions and lower overall TCO.



**Performance** – Provides comprehensive enterprise level functionality for rapidly deploying, configuring and running high performance, large volume data processing platforms.

**Extensibility** – Simple to build upon by adding further Kx tools or solutions, integrating seamlessly with Dashboards, Analyst and Stream for Kx.

**Flexibility** – A more flexible environment than typical canned solutions, providing the enterprise features that form the core on which we have built all our Kx products.

### At a Glance



Control for Kx is an all-encompassing code and process management system, allowing our clients to exercise rigorous control across their analytic landscape.

### The Kx Advantage

- A platform for rapid application development with robust run-time management
- Pre-built analytics repository for historical and real-time data
- Includes a repository of rich, out-of-the-box process templates
- Allows for continuous deployment of code base
- Single integrated software platform for quicker easier implementation and lower TCO
- High performance and scalability of Kx
- Enterprise features, security, auditing, logging, archiving and compression
- Integration with version control platforms
- Standardized and streamlined maintenance and support

**Kx IDE**

The product comes with an integrated development environment for rapid application development, debugging and continuous deployment (due to pre-built libraries that enable code reuse, simple user navigation and development of an existing code base).

**Downstream Control**

- **Housekeeping:** A single hub to manage and control all housekeeping tasks
- **Grouping:** Easily group configuration parameters, analytics and processes
- **SVN:** Link to SVN repository for direct code check-in
- **Custom Processes:** Build and develop custom services and gateways
- **Audit Logging:** A full revision history is held by Control for each entity on the Central Data Store
- **Archiving:** In built archiving to allow for easy roll back of systems and version control

**Governance**

Complex entitlement layers can be created to manage user access, enforcing security permissioning, confidentiality requirements and ownership of activity. Control for Kx also provides robust failover management, standardised logging, error handling and process monitoring. Users can configure multiple components centrally, monitor dependencies and view system status. This allows central management of configuration and dependencies, as well as application deployment across distributed clusters.

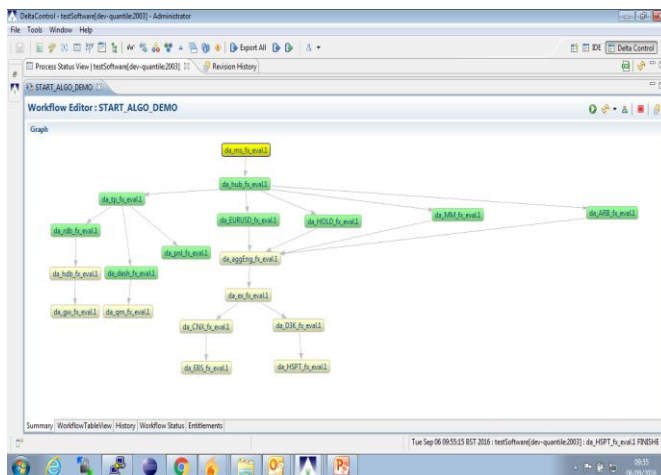
**Alerts Framework**

Contains an alerts subsystem which acts as the central point to define, capture and view alerts. Alerts can be assigned for automated communication and escalation. They can be 100% tailored to specific client needs; whether that is to publish via external API or generate different alert types per use case.

**About Kx**

Kx has been the software leader for complex analytics on massive-scale streaming data for over two decades. The Kx technology is an established and trusted standard for trading, surveillance and research in financial services. Kx has emerged as the elegant, integrated solution to the analytic needs of the Pharma, Retail, Utilities and High Tech Manufacturing industries scaling effortlessly to the data challenges of the Internet of Things.

Kx is a division of First Derivatives plc. Listed on the London Stock Exchange [FDP:LN] First Derivatives is a specialist software and consulting organization with a uninterrupted track record of customer success and profitable growth since it was listed in 2002.



**Workflow Management**

Workflow manager allows processes to be linked in a logical order. This allows process ordering, whereby a downstream process will only commence upon completion of its parents in the process chain; and process scheduling, whereby future processes can be arranged to start automatically. Workflows show tasks, connected by their dependencies.

**Process and Analytics Libraries**

Control for Kx provides a repository for customisation of process and analytic libraries that enable quick instantiation of ticker plant, intra-day, historic and real-time processes and engines. This allows clients to support notifications, deployments, process connections, monitoring and archiving.

**Powerful Analytics and Programming Language (Q)**

Kx uses a powerful and interactive functional data scripting language, Q, which allows clients to express and execute complex concepts using a comprehensive set of functions and SQL integration. The language has been optimized for speed and performance, which translates into being able to handle streaming, real-time or historical data; process and analyze data in microseconds; and perform hundreds of millions of transactions per second against Petabyte datasets.

**Kx in Action**

**Visualize and Explore Data**

- Dashboards for Kx
- Analyst for Kx

**Control, Deploy & Monitor**

- Control for Kx
- Stream for Kx
- Kx for Monitoring

**Industry Solutions**

- Finance
  - Surveillance
  - Algo
  - Flow
- Pharma
- Utilities
- IoT

KX

Head Office	London	New York	Singapore	Sydney	Toronto	Tokyo
3 Canal Quay, Newry, BT35 6BP N. Ireland +44 (0)283 0252242	Cannon Green Building, 1 Suffolk Lane, EC4R 0AY United Kingdom +44 (0)207 337 1210	45 Broadway, NY 10006 USA +1 (212) 447-6700	55 Market Street, 048941 Singapore +65 6592 1960	22 Pitt Street, NSW 2000 Australia +61 (02) 9236 700	1599 Hurontario Street, Mississauga, On, L5G 4S1 Canada +1-905-278-9444	Sanno Park Tower, 2-11-1 Nagata-cho, Chiyoda-ku, 100-6162 Japan +81 (0)36 205 3494